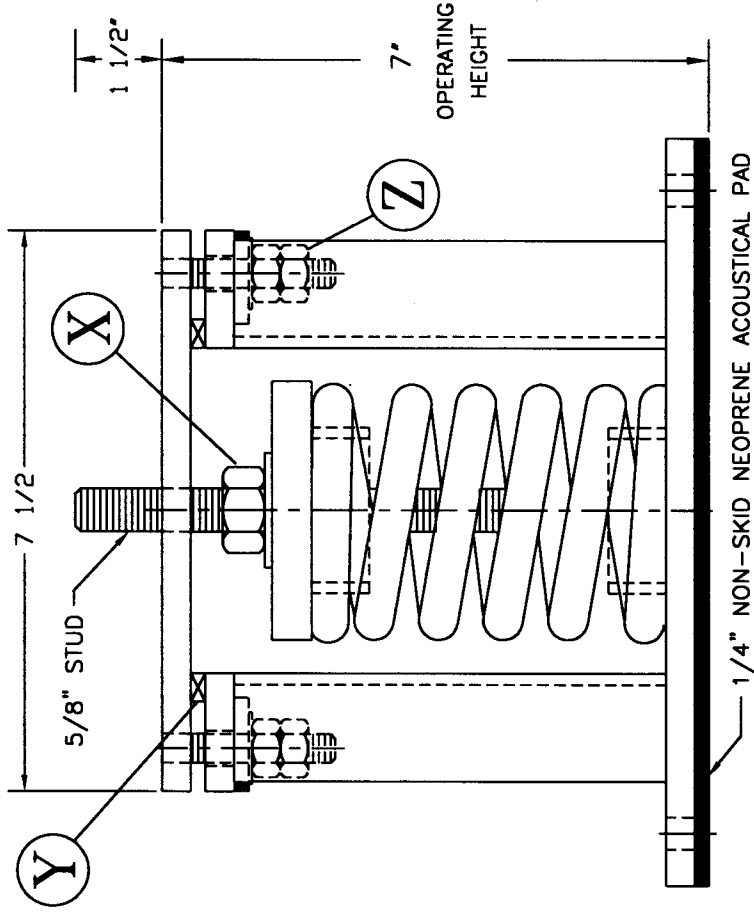
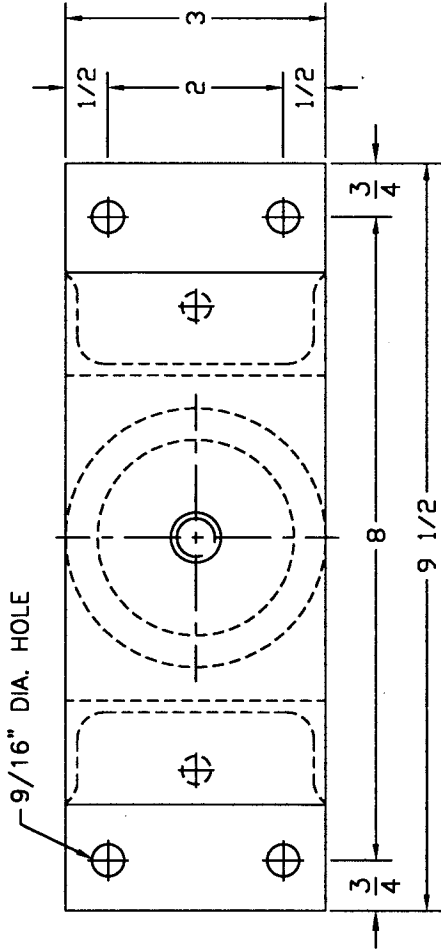


# TYPE "1KW3-ST" VERTICALLY RESTRAINED SPRING ISOLATOR



ISOLATOR TYPE	COLOR CODE	RATED LOAD	RATED DEFL.
F30-ST F31-ST F32-ST F33-ST F34-ST F35-ST F36-ST F37-ST F38-ST F39-ST F40-ST F41-ST { 1KW3 }	Silver	155 #	1.85"
	Yellow	220 #	1.70"
	Red	310 #	1.55"
	White	420 #	1.40"
	Green	540 #	1.25"
	Blue	710 #	1.15"
	Orange	900 #	1.05"
	Gold	1030 #	1.00"
	Red/Silver	1275 #	1.00"
	Red/Yellow	1630 #	1.00"
	Red/White	2100 #	1.00"
Red/Green	3000 #	1.00"	

ISOLATOR ZINC-ELECTROPLATED

INSTALLATION INSTRUCTIONS:

1. INSTALL ISOLATORS UNDER BRACKET, BASE OR EQUIPMENT LEG. ISOLATORS MUST BE INSTALLED ON A LEVEL SURFACE.
2. INSTALL EQUIPMENT (INCLUDING ALL PIPING & WATER FOR COOLING TOWER).
3. TEMPORARILY REMOVE ALL VERTICAL LOCK NUTS "Z" FROM HOLD-DOWN BOLTS.
4. ADJUST ISOLATORS BY TURNING LEVELING NUT "X" CLOCKWISE SEVERAL TURNS AT A TIME ALTERNATELY ON EACH ISOLATOR UNTIL EQUIPMENT BEGINS TO RAISE. THEN LEVEL AS REQUIRED AND REMOVE TEMPORARY SHIMS "Y".
5. REPLACE ALL VERTICAL LOCK NUTS "Z" ON HOLD-DOWN BOLTS AND FASTEN FINGER TIGHT. EQUIPMENT IS NOW READY TO BE OPERATED.



VIBRATION ELIMINATOR CO. INC.  
 15 Dixon Avenue  
 Copiague, NY 11726  
 TEL (631) 841-4000 FAX (631) 841-0020

JOB : \_\_\_\_\_  
 CONTRACTOR : \_\_\_\_\_  
 P.O. NO. : \_\_\_\_\_

Dwg. No. \_\_\_\_\_

CS000/1KJ35K.DWG