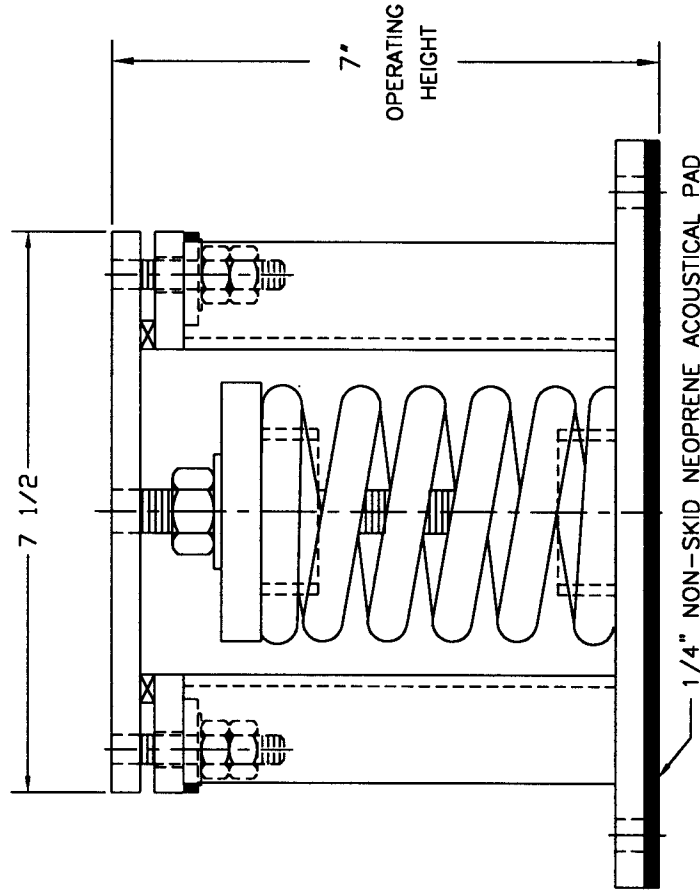
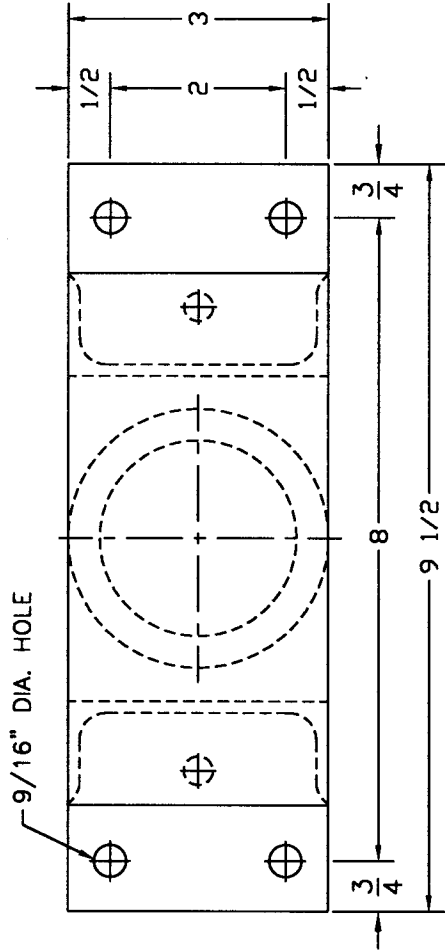


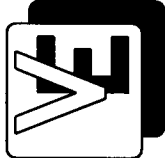
TYPE "1KW3" VERTICALLY RESTRAINED SPRING ISOLATOR



ISOLATOR TYPE	COLOR CODE	RATED LOAD	RATED DEFL.
F30 F31 F32 F33 F34 F35 F36 F37 F38 F39 F40 F41 1KW3	Silver	155 #	1.85"
	Yellow	220 #	1.70"
	Red	310 #	1.55"
	White	420 #	1.40"
	Green	540 #	1.25"
	Blue	710 #	1.15"
	Orange	900 #	1.05"
	Gold	1030 #	1.00"
	Red/Silver	1275 #	1.00"
	Red/Yellow	1630 #	1.00"
	Red/White	2100 #	1.00"
Red/Green	3000 #	1.00"	

ISOLATOR ZINC-ELECTROPLATED

CE2000/1KW3SK.DWG.



VIBRATION ELIMINATOR CO. INC.
 15 Dixon Avenue
 Copiague, NY 11726
 TEL. (631) 841-4000 FAX (631) 841-0020

JOB : _____
 CONTRACTOR : _____
 P.O. NO. : _____

Dwg. No. _____