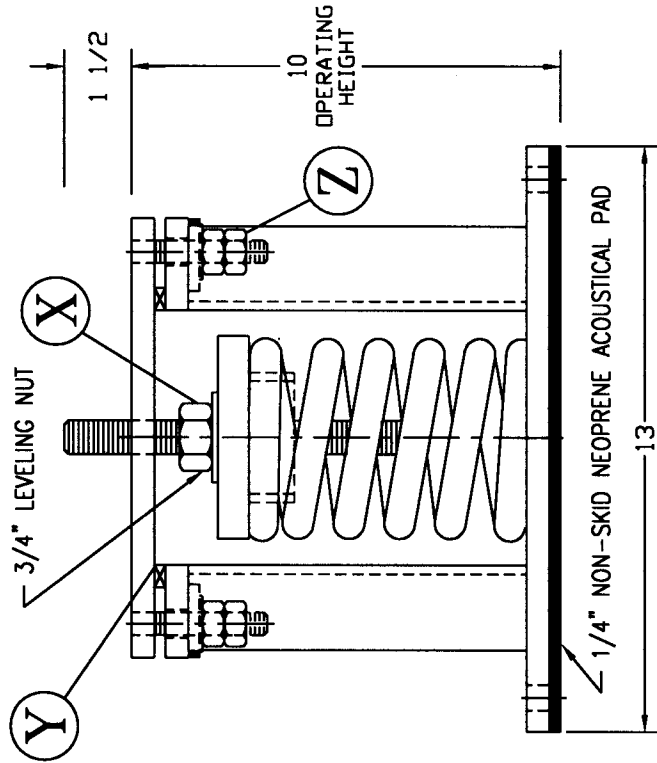
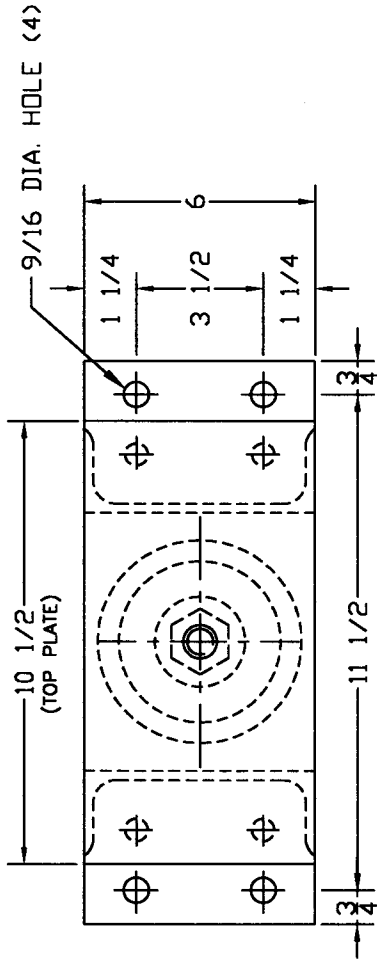


TYPE "1KW5-ST" VERTICALLY RESTRAINED SPRING ISOLATOR



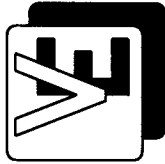
ISOLATOR TYPE	COLOR CODE	RATED LOAD	RATED DEFL.
{ F91-ST F92-ST F93-ST F94-ST F95-ST F96-ST F97-ST F98-ST } 1KW5	Silver	300#	3.0"
	Yellow	600#	3.0"
	Red	975#	3.0"
	White	1260#	3.0"
	Green	1530#	3.0"
	Blue	1893#	3.0"
	Orange	2238#	3.0"
	Gold	2634#	3.0"

ALL HARDWARE ZINC-ELECTROPLATED

INSTALLATION INSTRUCTIONS:

1. INSTALL ISOLATORS UNDER BRACKET, BASE OR EQUIPMENT LEG. ISOLATORS MUST BE INSTALLED ON A LEVEL SURFACE.
2. INSTALL EQUIPMENT (INCLUDING ALL PIPING & WATER FOR COOLING TOWER).
3. TEMPORARILY REMOVE ALL VERTICAL LOCK NUTS "Z" FROM HOLD-DOWN BOLTS.
4. ADJUST ISOLATORS BY TURNING LEVELING NUT "X" CLOCKWISE SEVERAL TURNS AT A TIME ALTERNATELY ON EACH ISOLATOR UNTIL EQUIPMENT BEGINS TO RAISE. THEN LEVEL AS REQUIRED AND REMOVE TEMPORARY SHIMS "Y".
5. REPLACE ALL VERTICAL LOCK NUTS "Z" ON HOLD-DOWN BOLTS AND FASTEN FINGER TIGHT. EQUIPMENT IS NOW READY TO BE OPERATED.

C2000/1KW5.DWG.



VIBRATION ELIMINATOR CO. INC.

15 Dixon Avenue
Copiague, NY 11726

TEL. (631) 841-4000 FAX (631) 841-0020

JOB : _____
 CONTRACTOR : _____
 P.O. NO. : _____

Dwg. No. _____