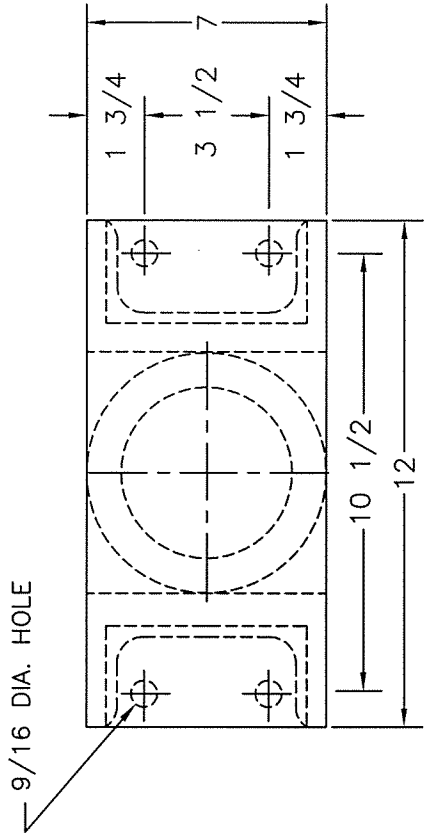


TYPE "1KW7" VERTICALLY RESTRAINED SPRING ISOLATOR



ISOLATOR TYPE	COLOR CODE	RATED LOAD	RATED DEFL.
{ F71 F72 F73 F74 F75 F76 F77 F78 } 1KW7	Silver	355 #	5.90"
	Yellow	770 #	5.30"
	Red	1080 #	5.00"
	White	1470 #	4.75"
	Green	1980 #	4.50"
	Blue	2575 #	4.20"
	Orange	3270 #	3.90"
	Gold	4000 #	3.60"

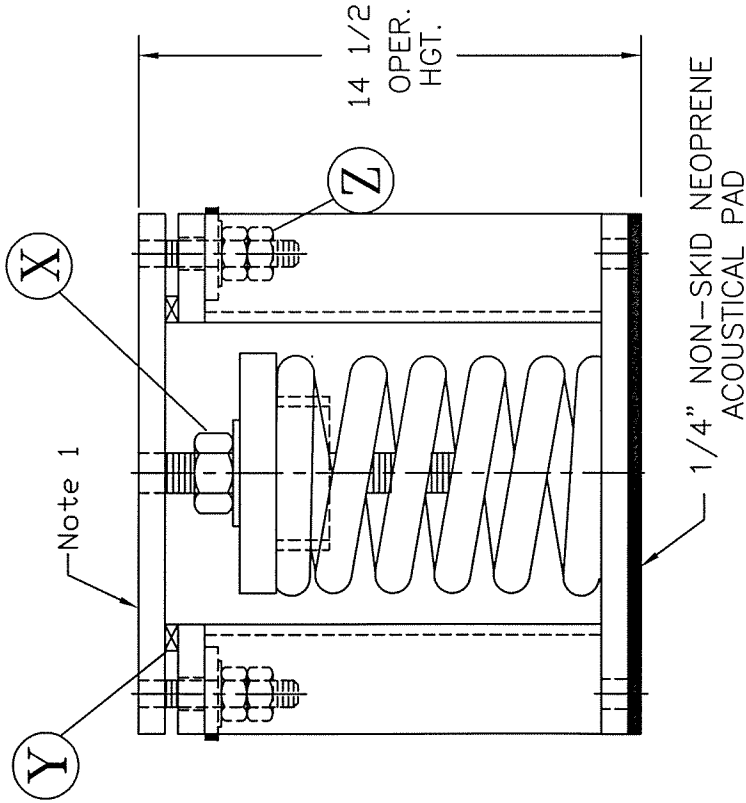
ALL HARDWARE ZINC-ELECTROPLATED

WELDING NOTE (1):

Weld the cooling tower support beam to the isolator's top plate with a total of (6)-1/4"x2" long fillet welds. There shall be one weld @ the center of each isolator's width and one weld in each of the (4) length corners.

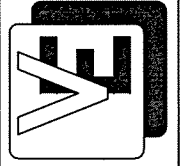
INSTALLATION INSTRUCTIONS:

1. INSTALL ISOLATORS UNDER BRACKET, BASE OR EQUIPMENT LEG. ISOLATORS MUST BE INSTALLED ON A LEVEL SURFACE.
2. INSTALL EQUIPMENT (INCLUDING ALL PIPING & WATER FOR COOLING TOWER).
3. TEMPORARILY REMOVE ALL VERTICAL LOCK NUTS "Z" FROM HOLD-DOWN BOLTS.
4. ADJUST ISOLATORS BY TURNING LEVELING NUT "X" CLOCKWISE SEVERAL TURNS AT A TIME ALTERNATELY ON EACH ISOLATOR UNTIL EQUIPMENT BEGINS TO RAISE. THEN LEVEL AS REQUIRED AND REMOVE TEMPORARY SHIMS "Y".
5. REPLACE ALL VERTICAL LOCK NUTS "Z" ON HOLD-DOWN BOLTS AND FASTEN FINGER TIGHT. EQUIPMENT IS NOW READY TO BE OPERATED.



14 1/2
OPER.
HGT.

1/4" NON-SKID NEOPRENE
ACOUSTICAL PAD



C2000/1KW7-SM.DWG
VIBRATION ELIMINATOR CO. INC.
 15 Dixon Avenue
 Copiague, NY 11726
 TEL. (631)841-4000 FAX (631) 841-0020

JOB : _____
 CONTRACTOR : _____
 P.O. NO. : _____

Dwg. No. _____