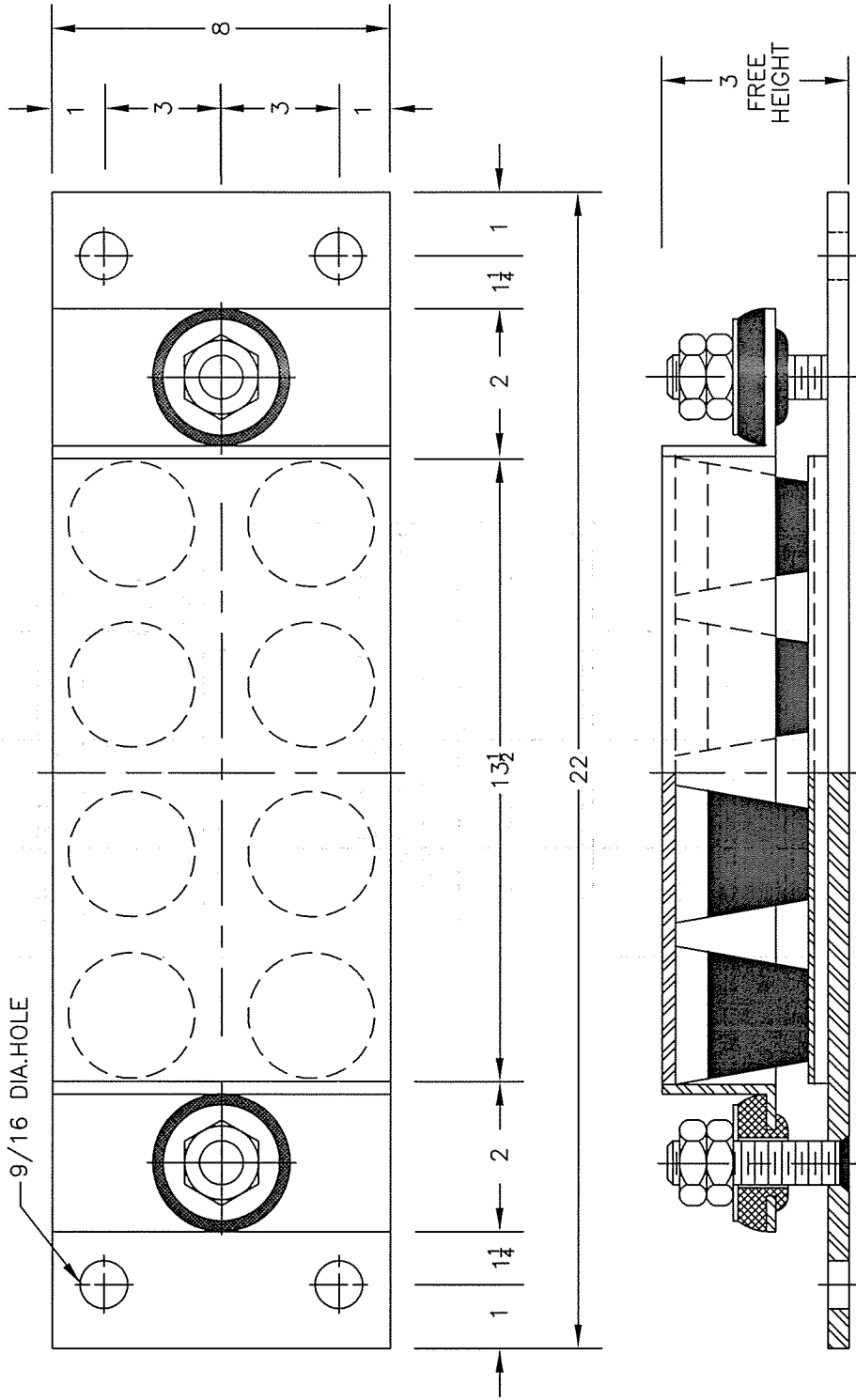


# TYPE "840TD" NEOPRENE ISOLATOR

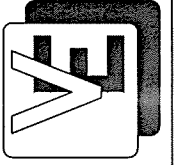


### INSTALLATION INSTRUCTION

1. PLACE ISOLATORS UNDER EQUIPMENT AT POINTS OF SUPPORT.
2. BOLT ISOLATORS TO EQUIPMENT.
3. SHIM ISOLATORS TO LEVEL EQUIPMENT.

Model Number	Color Code	Rated Load	Rated Defl.
840TD { 3	Orange	4400#	.5"
	Orange	7200#	.5"

NOTE: ISOLATORS ARE DESIGNED FOR STATIC LOADS ONLY WITH NO LEVELING DEVICES.



VIBRATION ELIMINATOR CO. INC.  
 15 Dixon Avenue  
 Copiague, NY 11726  
 TEL. (631) 841-4000 FAX (631) 841-0020

840TDsp.DWG

Dwg. No.: