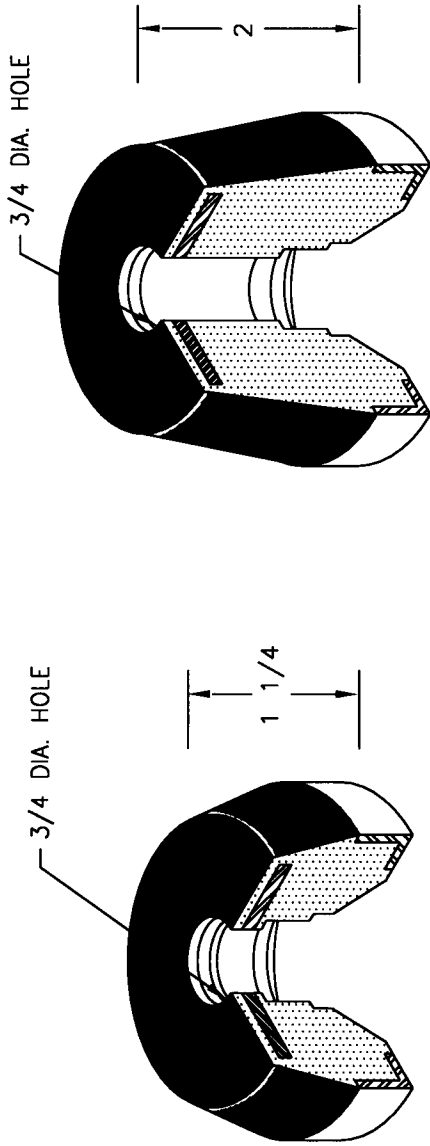


NEOPRENE GROMMET



2 3/4

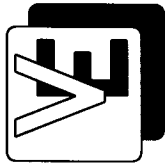
9T (Fig. 12)

2 3/4

9TD (Fig. 13)

MODEL NUMBER	MAX. SHEAR LOAD	MAX. COMPR. LOAD	RATED DEFL.
9T	-	150 #	.25"
	-	350 #	
	-	550 #	
	-	900 #	
9TD	-	150 #	.5"
	-	350 #	
	-	550 #	
	-	900 #	

JOB : _____
 CONTRACTOR : _____
 P.O. NO. : _____



VIBRATION ELIMINATOR CO. INC.
 15 Dixon Avenue
 Copiague, NY 11726
 TEL (631)841-4000 FAX (631)841-0020

Dwg. No.