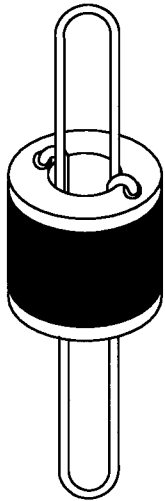




Vibration Eliminator

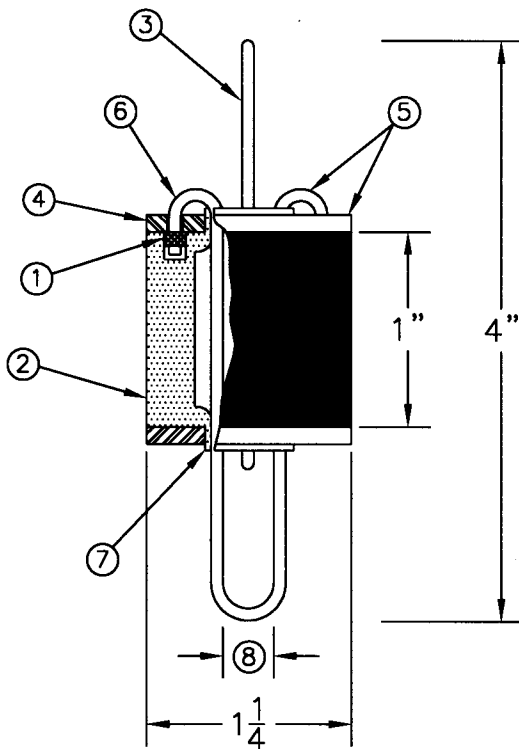
Co., Inc.

TYPE "ACH-1" NEOPRENE HANGER



MODEL NUMBER	COLOR CODE	RATED LOAD	RATED DEFL.
ACH-1-20	Red	65 #	0.20"
ACH-1-40	Black	120 #	0.20"
ACH-1-70	Blue	200 #	0.20"

SHIPPING WEIGHT: 16 LBS/100 HANGERS



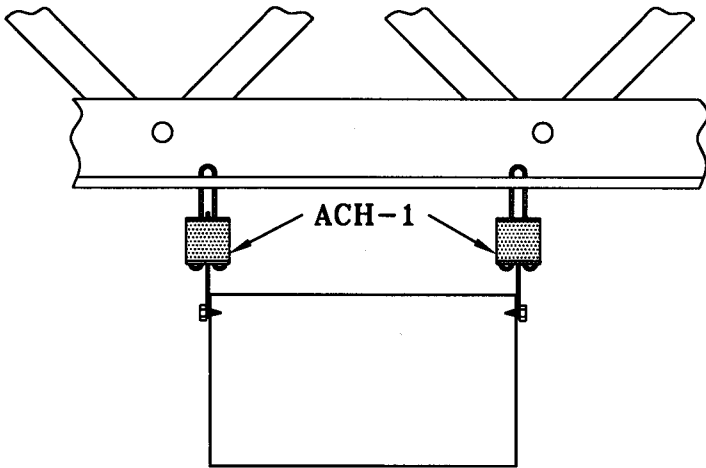
- ① Ends of steel hooks interlocked and swaged in place to provide failsafe construction.
- ② High tensile gum rubber insert with antiozonant added for long life.
- ③ 11 gage cold drawn steel wire.
- ④ Wrought steel pressure plates.
- ⑤ All metal parts zinc plated to prevent corrosion.
- ⑥ Gimble construction for even load distribution.
- ⑦ Rubber collar prevents metal-to-metal contact.
- ⑧ Clearance for up to a 3/16" diameter rod.

VIBRATION ELIMINATOR CO., INC. ■ 15 Dixon Avenue ■ Copiague, New York 11726
Tel. (631) 841-4000 Fax (631) 841-0020

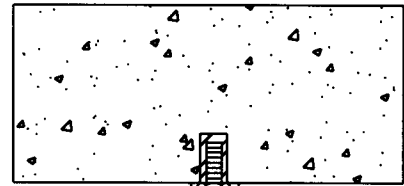


Vibration Eliminator

Co., Inc.

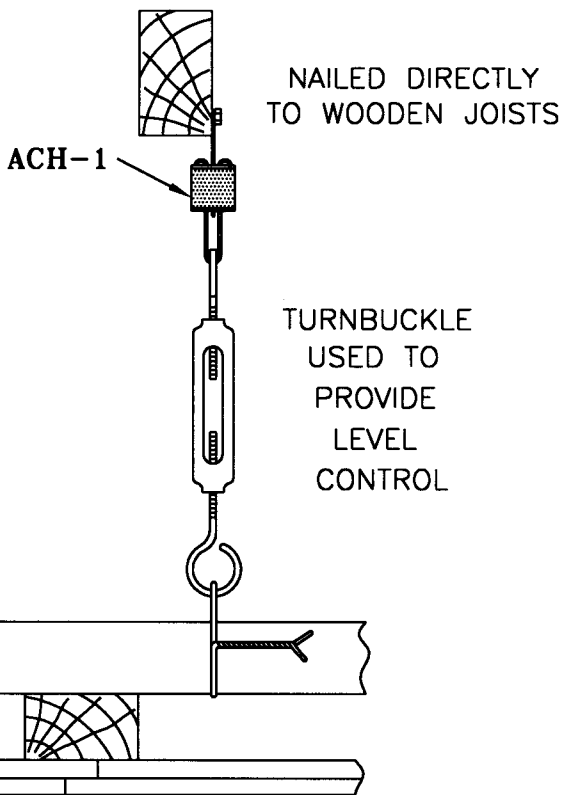


HOT OR COLD
AIR DUCT



SUSPENDED METAL
LATH AND PLASTER
CEILING

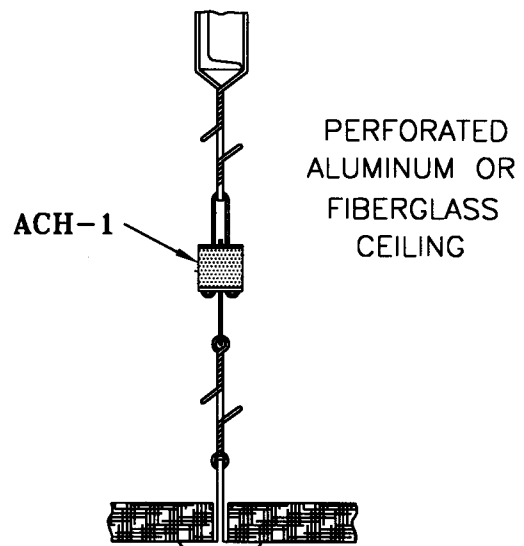
ACH-1



NAILED DIRECTLY
TO WOODEN JOISTS

ACH-1

TURNBUCKLE
USED TO
PROVIDE
LEVEL
CONTROL



PERFORATED
ALUMINUM OR
FIBERGLASS
CEILING

ACH-1