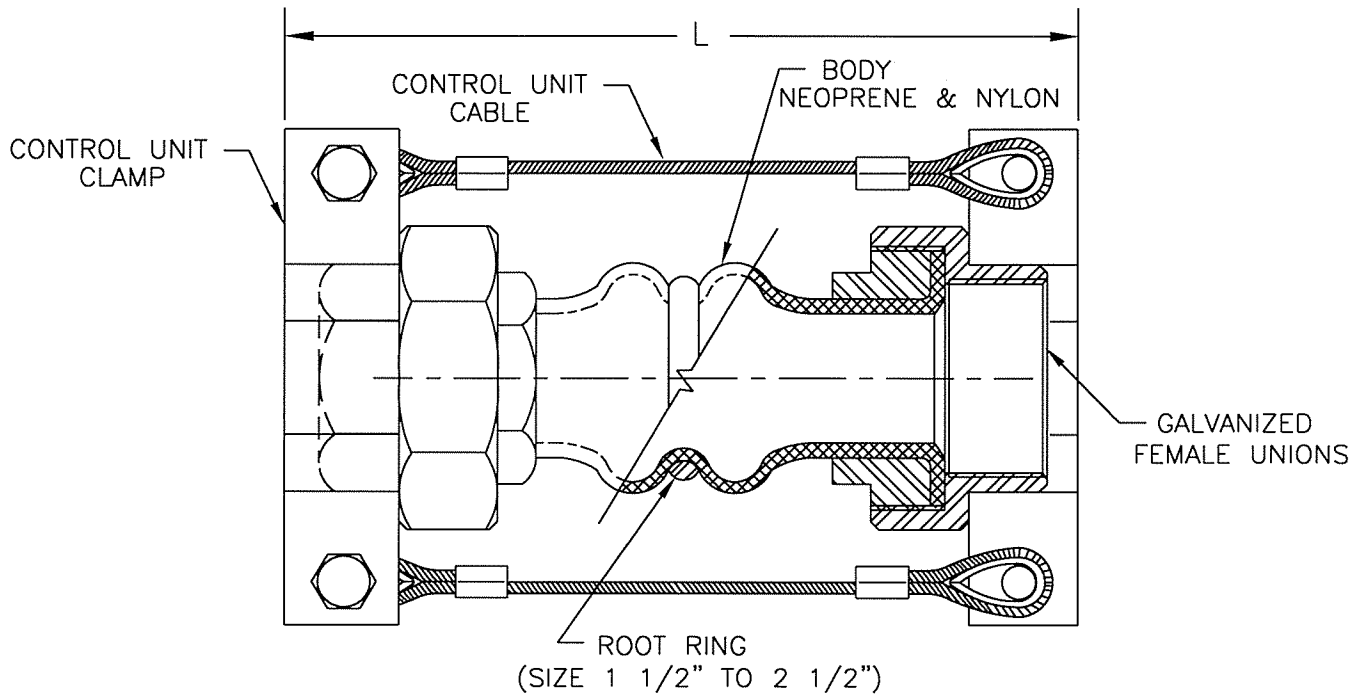




JOB: _____
 CONTRACTOR: _____
 P.O. NO. _____

V.E. DWG. NO.

DOUBLE SPHERE FLEXIBLE CONNECTORS WITH UNION COUPLINGS



Double Sphere Unions are used for connecting pipes and equipment where threaded union ends are preferred. They are made of neoprene and nylon and are resistant to ozone and aging. They also accommodate thermal movement and misalignment.

This flexible joint should be installed the length shown on this drawing. The control unit clamp may extend past the end of the joint. If the control units are not used, the piping and equipment connected by this flexible joint must be anchored and guided to prevent movement past design limits.

Not intended for torsion.

QTY.	SIZE (IN.)	L (End to End) (IN.)	PRESSURE (PSI) vs. TEMPERATURE	MOVEMENT CAPABILITY				TAG
				COMPRESSION	ELONGATION	LATERAL	ANGULAR	
			225°F	(IN.)	(IN.)	(IN.)	(DEGREES)	
	3/4	8	150	.88	.25	1	45	
	1	8	150	.88	.25	1	45	
	1 1/4	8	150	.88	.25	1	45	
	1 1/2	8	150	.88	.25	1	45	
	2	8	150	.88	.25	1	45	
	2 1/2	8	150	.88	.25	1	45	
	3	8	150	.88	.25	1	45	