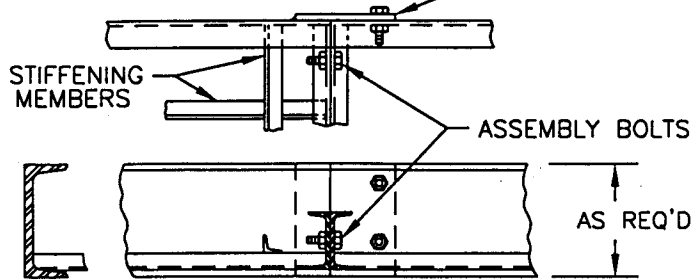




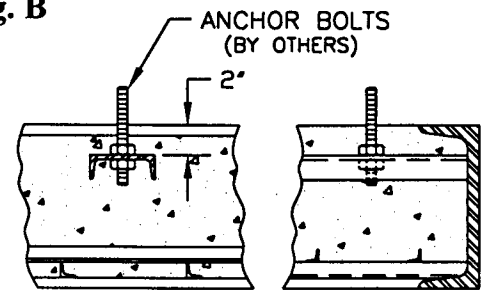
# Installation Instructions for 'SN' Inertia Frames

V. E. Dwg. No.  
JL84201B

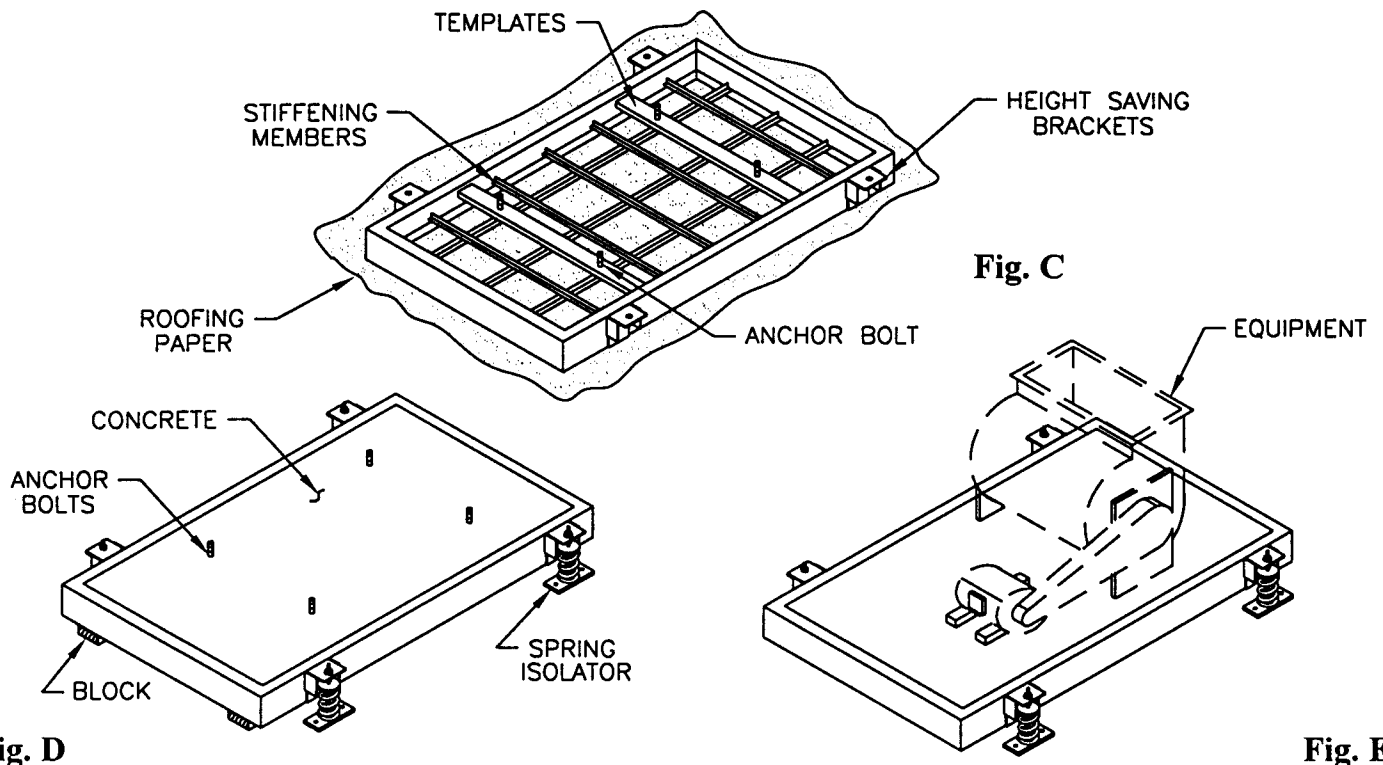
**Fig. A** TO BE BOLTED AND WELDED AT JOBSITE  
PRIOR TO POURING CONCRETE



**Fig. B**



DETAILS OF TYPICAL TEMPLATE



**Fig. D**

**Fig. E**

- 1.) Prior to pouring concrete, cover floor area with plastic sheathing or roofing paper. Overlap a minimum of three inches to prevent seepage. (Fig. C)
- 2.) Set frame on top of paper. If shipped in more than one section, assemble and weld sections together as shown in Fig. A.
- 3.) Insert and lock anchor bolts in templates as shown Fig. B.
- 4.) Pour concrete into frame until level with top.
- 5.) After concrete has set, elevate frame as specified on base drawing and insert blocks. (Fig. D) (Do not use height saving brackets as rigging or jacking lugs.)
- 6.) Proceed to install equipment.
- 7.) After equipment is installed, locate isolators under brackets (Fig. E) and proceed to level springs in accordance with installation instructions.
- 8.) After the base is level and load is transferred to springs, remove blocks.
- 9.) Equipment is now ready to be operated.

Vibration Eliminator Co., Inc. • 15 Dixon Avenue • Copiague, New York 11726  
Tel. 631.841.4000 Fax. 631.841.0020