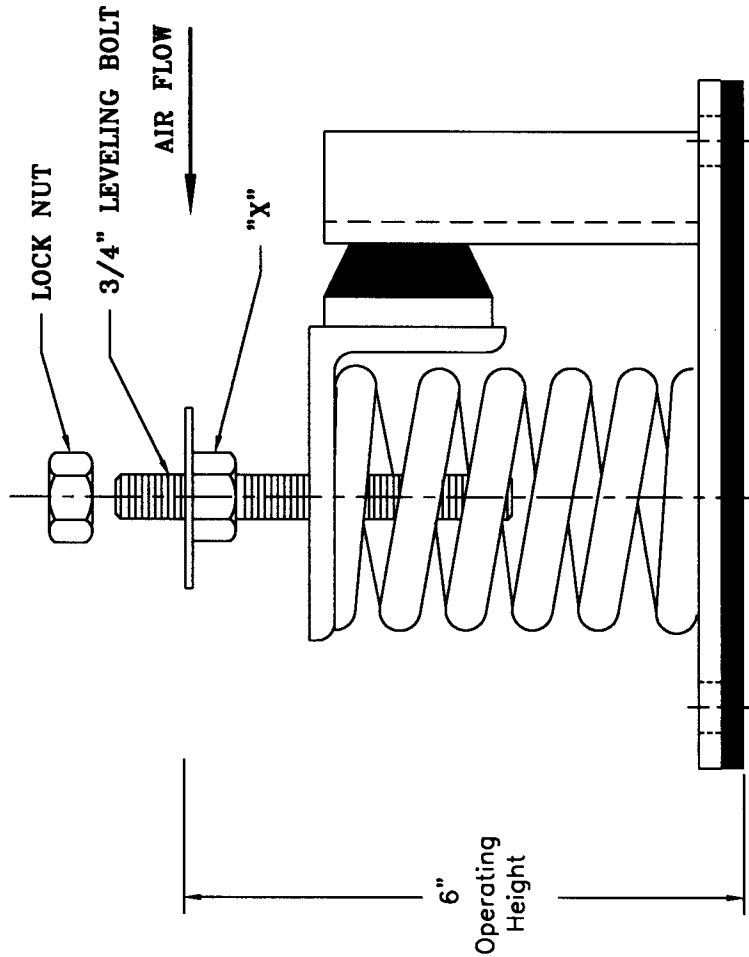
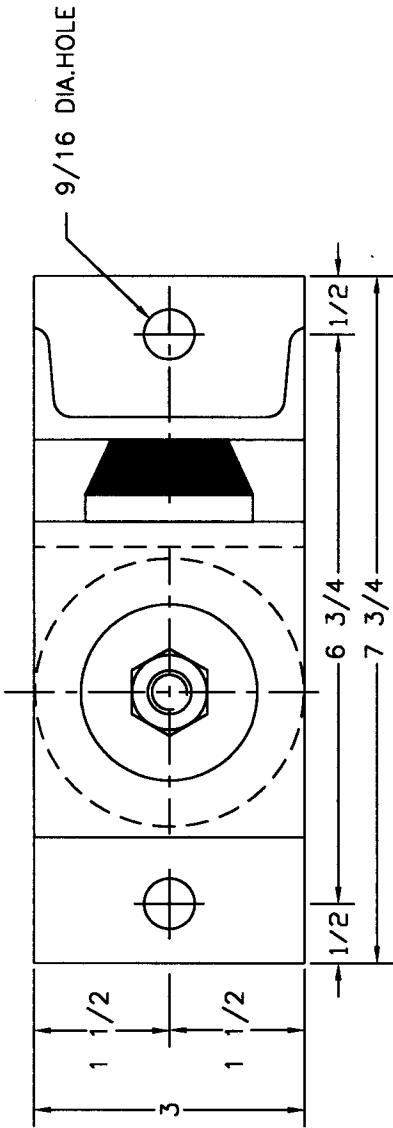
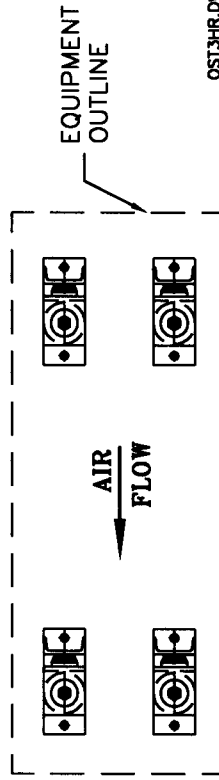


TYPE "OST3HR" STABLE, FREE-STANDING SPRING WITH HORIZONTAL SNUBBER

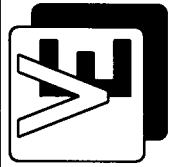


INSTALLATION INSTRUCTIONS

1. POSITION ISOLATORS UNDER THE EQUIPMENT AND VERTICALLY ALIGN SO THAT FASTENING TO THE EQUIPMENT WILL NOT DISTORT THE SPRINGS. THE "OST" ISOLATORS MUST BE INSTALLED ON A LEVEL SURFACE.
2. PROCEED TO ADJUST THE ISOLATORS BY TURNING THE LEVELING NUT "X" COUNTER-CLOCKWISE SEVERAL TURNS AT A TIME ALTERNATELY ON EACH ISOLATOR UNTIL THE EQUIPMENT BEGINS TO RAISE. THEN LEVEL AS REQUIRED.
3. TURN LOCK NUT ONTO STUD AND SECURE FIRMLY IN PLACE AGAINST THE TOP OF THE EQUIPMENT LEG OR MOUNTING FRAME
4. ISOLATORS ARE NOW PROPERLY ADJUSTED AND READY FOR THE EQUIPMENT TO BE OPERATED.



OST3HR.DWG



VIBRATION ELIMINATOR CO. INC.
15 Dixon Avenue
Copiague, NY 11726
TEL. (631)841-4000 FAX (631)841-0020

JOB : _____
CONTRACTOR : _____
P.O. NO. : _____

Dwg. No. _____

ISOLATOR TYPE	COLOR CODE	RATED LOAD	RATED DEFL.
OST3HR	Silver	155 #	1.85"
	Yellow	220 #	1.70"
	Red	310 #	1.55"
	White	420 #	1.40"
	Green	540 #	1.25"
	Blue	710 #	1.15"
	Orange	900 #	1.05"
	Gold	1030 #	1.00"
	Red/Silver	1275 #	1.00"
	Red/Yellow	1630 #	1.00"
	Red/White	2100 #	1.00"
Red/Green	3000 #	1.00"	