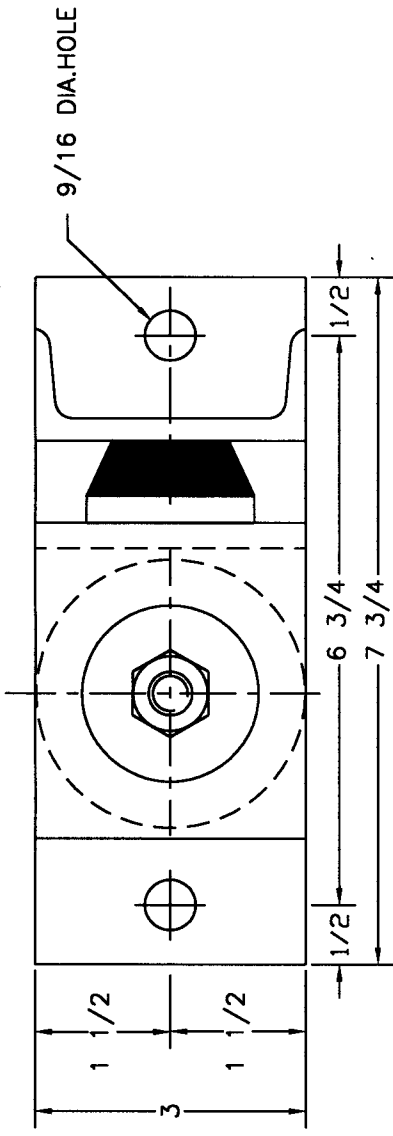
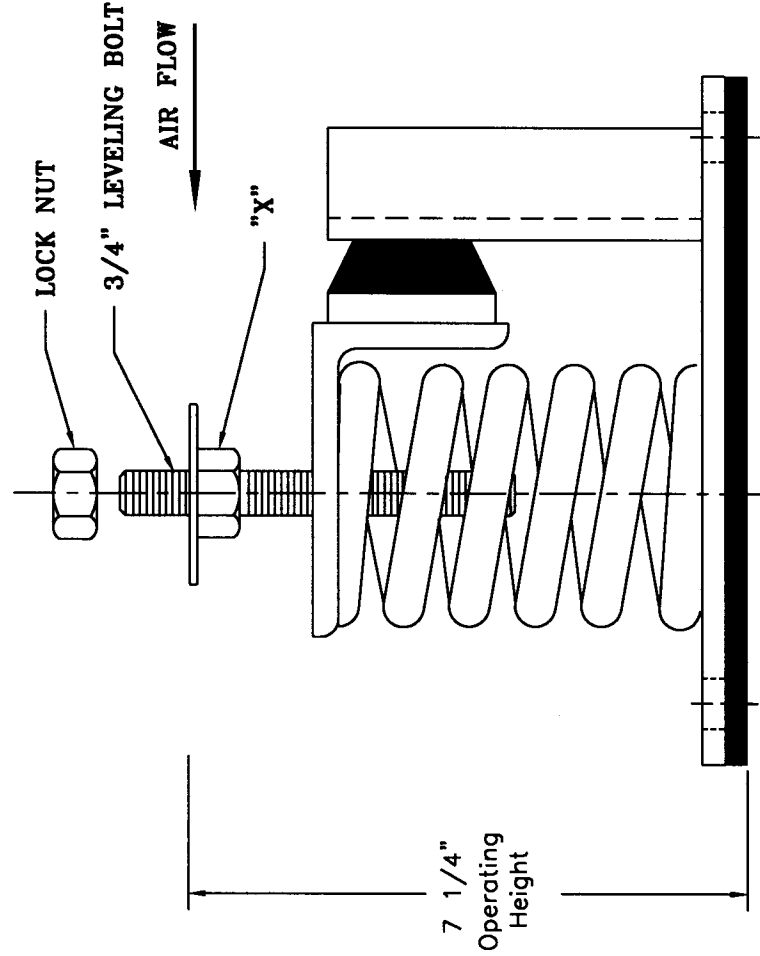


# TYPE "OST6HR" STABLE, FREE-STANDING SPRING WITH HORIZONTAL SNUBBER

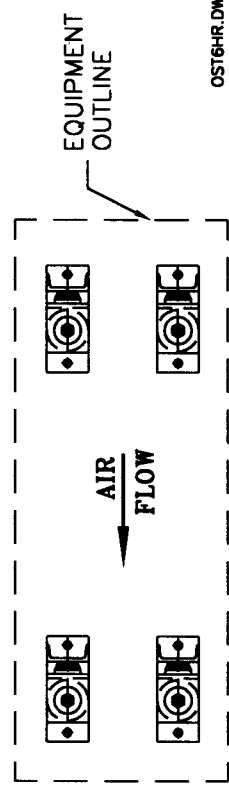


ISOLATOR TYPE	COLOR CODE	RATED LOAD	RATED DEFL.
OST6HR	Silver	60 #	3.00"
	Yellow	109 #	2.72"
	Red	155 #	2.58"
	Green	210 #	2.32"
	Blue	275 #	2.20"
	Orange	365 #	2.08"
	Gold	500 #	2.00"
	White	715 #	2.00"
	Red/Silver	945 #	2.00"
	Red/Yellow	1190 #	2.00"

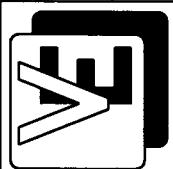


## INSTALLATION INSTRUCTIONS

1. POSITION ISOLATORS UNDER THE EQUIPMENT AND VERTICALLY ALIGN SO THAT FASTENING TO THE EQUIPMENT WILL NOT DISTORT THE SPRINGS. THE "OST" ISOLATORS MUST BE INSTALLED ON A LEVEL SURFACE.
2. PROCEED TO ADJUST THE ISOLATORS BY TURNING THE LEVELING NUT "X" COUNTER-CLOCKWISE SEVERAL TURNS AT A TIME ALTERNATELY ON EACH ISOLATOR UNTIL THE EQUIPMENT BEGINS TO RAISE. THEN LEVEL AS REQUIRED.
3. TURN LOCK NUT ONTO STUD AND SECURE FIRMLY IN PLACE AGAINST THE TOP OF THE EQUIPMENT LEG OR MOUNTING FRAME
4. ISOLATORS ARE NOW PROPERLY ADJUSTED AND READY FOR THE EQUIPMENT TO BE OPERATED.



OST6HR.DWG



VIBRATION ELIMINATOR CO. INC.  
 15 Dixon Avenue  
 Copiague, NY 11726  
 TEL. (631)841-4000 FAX (631)841-0020

JOB : \_\_\_\_\_

CONTRACTOR : \_\_\_\_\_

P.O. NO. : \_\_\_\_\_

Dwg. No. \_\_\_\_\_