
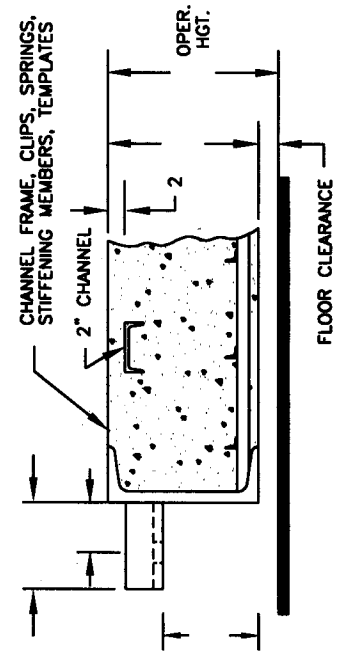
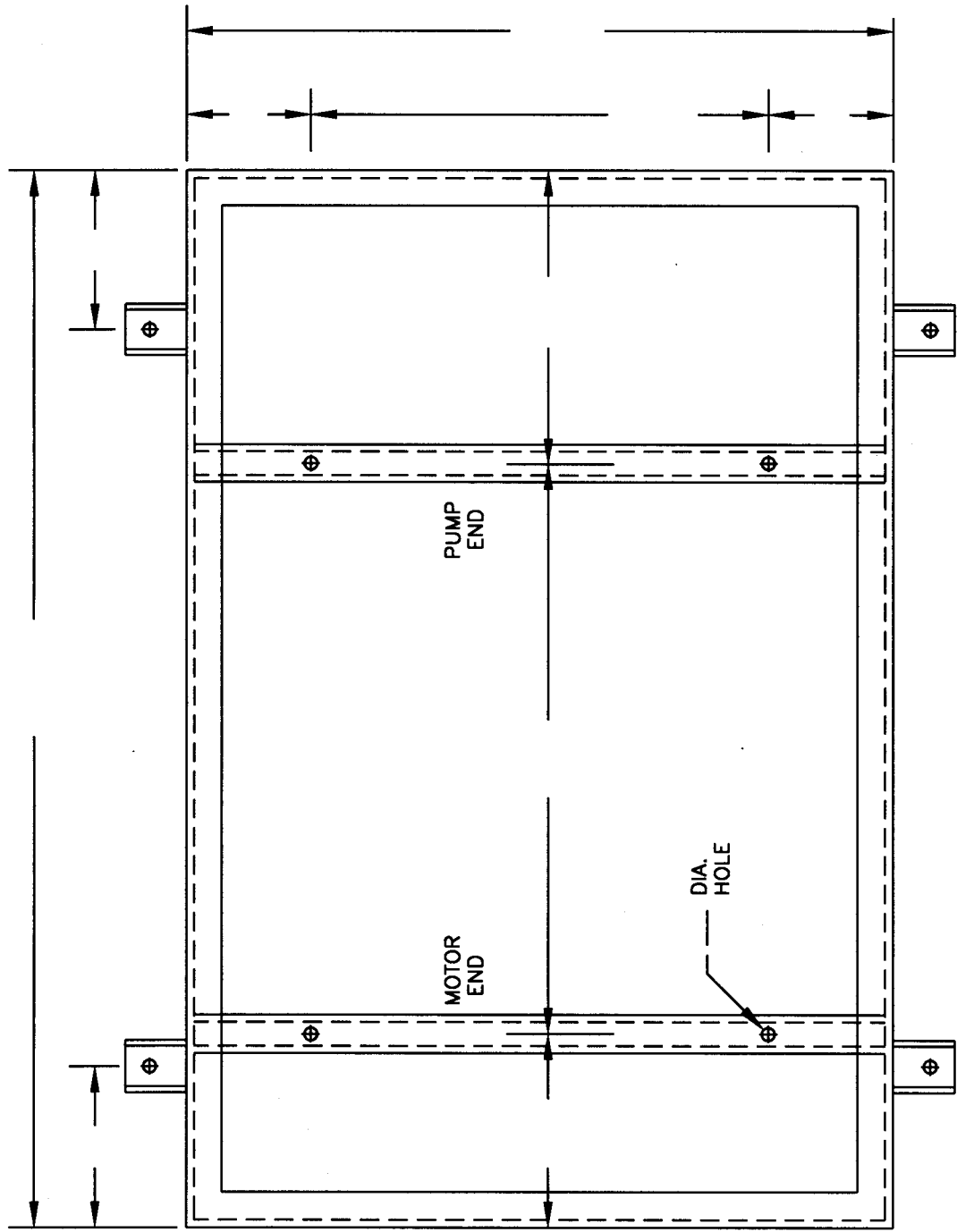


STIFFENING SCHEDULE	
PCS.	LG.
PCS.	LG.
1" x 1" 4	
WEIGHT DATA	
WEIGHT OF CONCRETE	#
WEIGHT OF EQUIPMENT	#
WEIGHT OF FRAME, BARS & TEMPLATES	#
TOTAL WEIGHT	#
SPRING ISOLATORS	
BASE REQ'D	
TAG:	
PUMP:	
MOTOR FRAME	MOTOR H.P.
EQUIP. RPM	APPROX. DEFL
EFFICIENCY.	
NO.	REVISION
	DATE
VIBRATION ELIMINATOR CO. INC.  15 Dixon Avenue Copiogue, NY 11726 PH. (516)841-4000 FAX (516)841-0020	
JOB.	
CONTR.	
PO.NO.:	
DWG. NO.	



BASE EXTENDED TO SUPPORT LONG RADIUS ELBOW.

FOR DETAILS OF ISOLATOR REFER TO V.E. DWG. NO. _____ -SP

BASE TO BE FILLED WITH CONCRETE AT JOBSITE BY OTHERS. SEE DWG. JL84-201A FOR INSTALLATION INSTRUCTIONS.



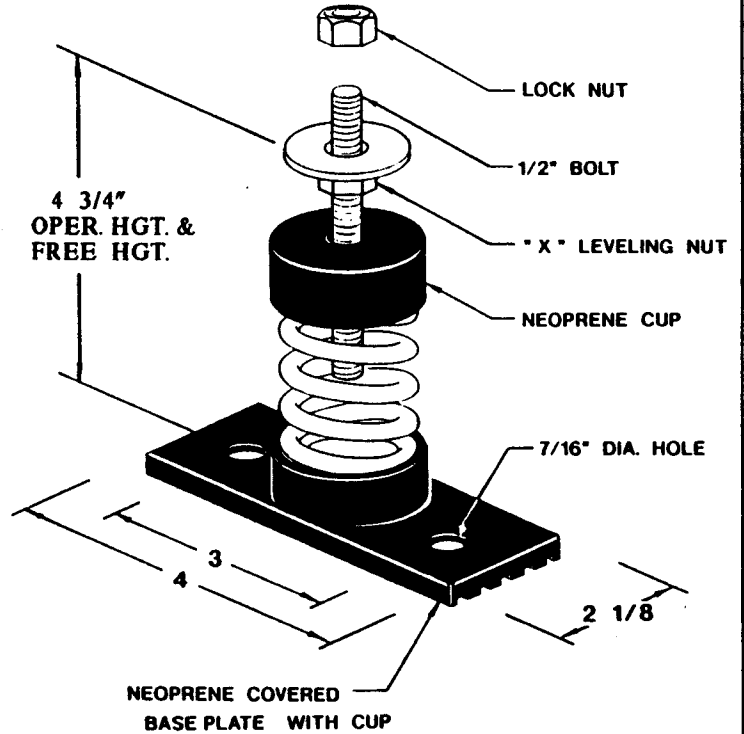
JOB: _____

CONTRACTOR: _____

P.O. NO.: _____

Type 'OST2R' Stable, Free Standing Spring Isolator

Model Number	Color Code	Rated Load	Rated Defl.	
OST2R	F21	Yellow	40 #	1.00"
	F22	Red	100 #	1.00"
	F23	White	150 #	1.00"
	F24	Green	210 #	1.00"
	F25	Blue	300 #	1.00"
	F26	Orange	400 #	1.00"
	F27	Brown	500 #	1.00"



INSTALLATION INSTRUCTIONS

- (1) ELEVATE EQUIPMENT TO OPERATING HEIGHT AND INSERT BLOCKS IN THIS POSITION.
- (2) POSITION ISOLATORS UNDER THE EQUIPMENT AND VERTICALLY ALIGN SO THAT FASTENING TO THE EQUIPMENT WILL NOT DISTORT THE SPRINGS. THE 'OST2R' ISOLATORS MUST BE INSTALLED ON A LEVEL SURFACE.
- (3) PROCEED TO ADJUST THE ISOLATORS BY TURNING THE LEVELING NUT 'X' COUNTER-CLOCKWISE SEVERAL TURNS AT A TIME ALTERNATELY ON EACH ISOLATOR UNTIL THE EQUIPMENT BEGINS TO RAISE, THEN LEVEL AS REQUIRED.
- (4) TURN LOCK NUT ONTO STUD AND SECURE FIRMLY IN PLACE AGAINST THE TOP OF THE EQUIPMENT LEG OR MOUNTING FRAME.
- (5) ISOLATORS ARE NOW PROPERLY ADJUSTED AND READY FOR THE EQUIPMENT TO BE OPERATED.

NOTE: ALL HARDWARE ZINC-ELECTROPLATED

VIBRATION ELIMINATOR CO., INC.
 15 Dixon Avenue
 Copiague, New York 11726
 Tel. (631)841-4000 Fax (631)841-0020

Rev.

Rev.

Date:

Dwg. No.:



Installation Instructions for 'SN' Inertia Frames

V. E. Dwg. No.
N01051-ES

TO BE BOLTED AND WELDED AT JOBSITE
PRIOR TO POURING CONCRETE

Fig. A

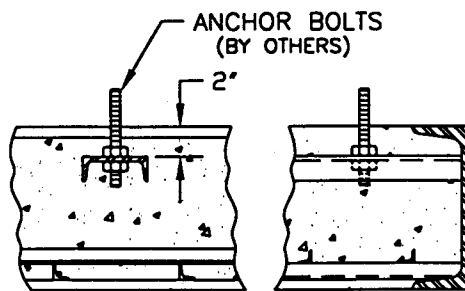
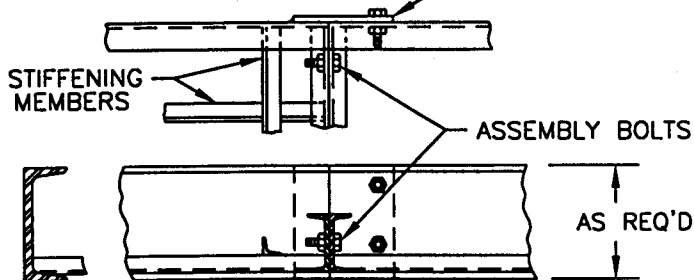


Fig. B

DETAILS OF TYPICAL TEMPLATE

Fig. C

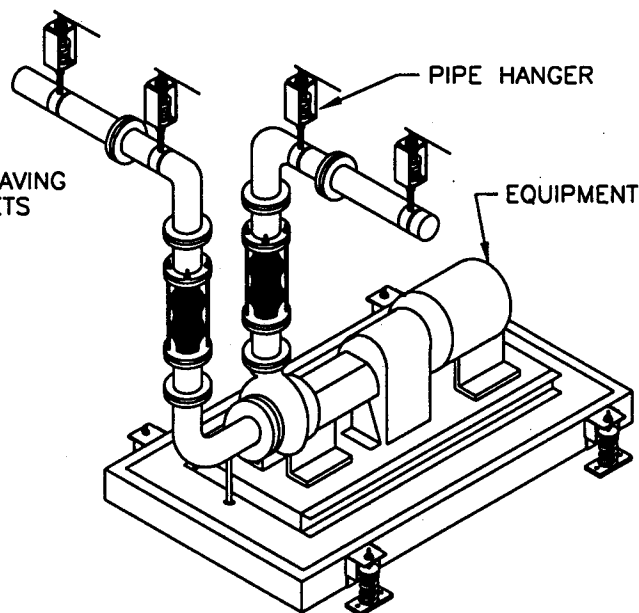
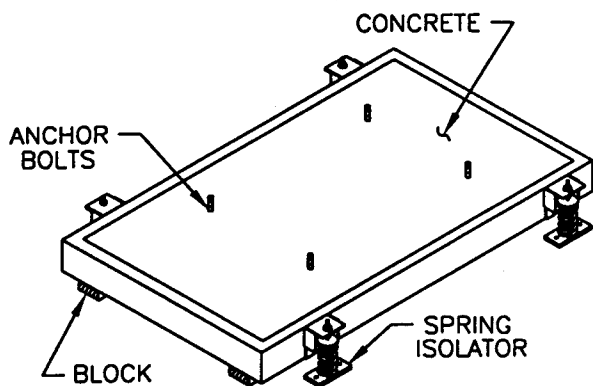
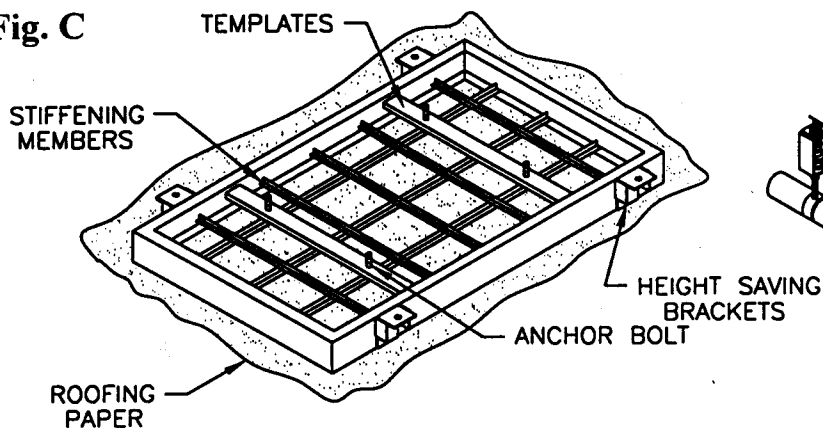


Fig. E

Fig. D

- 1.) Prior to pouring concrete, cover floor area with plastic sheathing or roofing paper. Overlap a minimum of three inches to prevent seepage. (Figure C)
- 2.) Set frame on top of paper. If shipped in more than one section, assemble and weld sections together as shown in Figure A.
- 3.) Insert and lock anchor bolts in templates as shown Figure B.
- 4.) Pour concrete into frame until level with top. (Figure D)
- 5.) After concrete has set, elevate frame as specified on base drawing and insert blocks to hold in this position. (Figure D) (Do not use height saving brackets as rigging or jacking lugs.)

- 6.) Proceed to install equipment.
- 7.) After equipment is installed, locate isolators under brackets (Figure E) and proceed to level springs in accordance with installation instructions.
- 8.) After the base is level and load is transferred to springs, install pipe hangers and flexible connectors.
- 9.) Adjust pipe hangers to insure they are supporting pipe. Install control rods on neoprene connectors to prevent elongation. (Figure F)
- 10.) Remove blocks.
- 11.) Equipment is now ready to be operated.

Vibration Eliminator Co., Inc. • 15 Dixon Avenue • Copiague, New York 11726
Tel. 631.841.4000 Fax. 631.841.0020