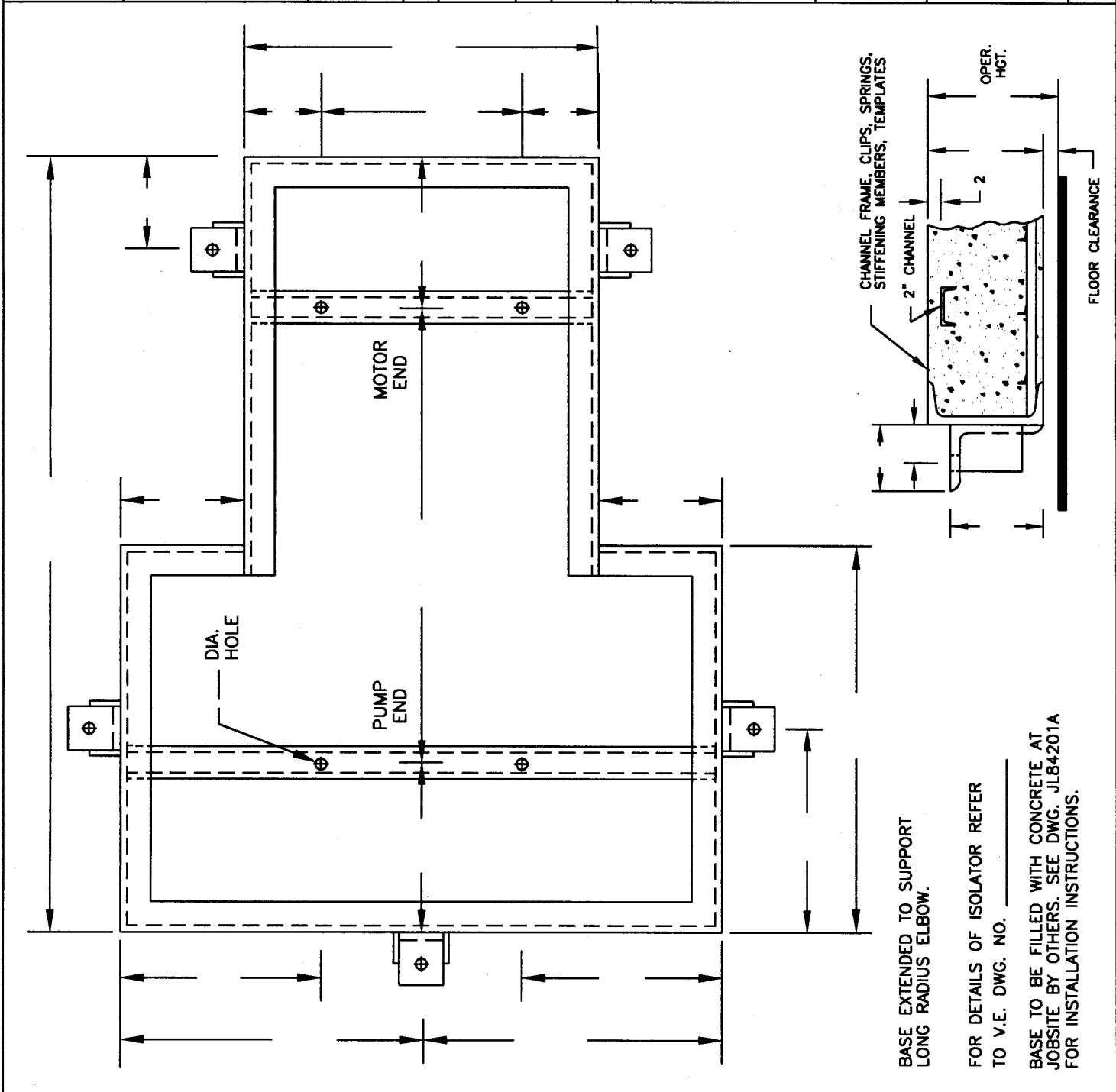


| STIFFENING SCHEDULE | | | |
|---|-----|------------|-----|
| PCS. | LG. | PCS. | LG. |
| PCS. | LG. | PCS. | LG. |
| 1"x1"4 | | | |
| WEIGHT DATA | | | |
| WEIGHT OF CONCRETE | # | | |
| WEIGHT OF EQUIPMENT | # | | |
| WEIGHT OF FRAME, BARS & TEMPLATES | # | | |
| TOTAL WEIGHT | # | | |
| SPRING ISOLATORS | | | |
| BASE(S) REQ'D | | | |
| TAG: | | | |
| PUMP: | | | |
| MOTOR FRAME | | MOTOR H.P. | |
| EQUIP. RPM | | DEFL. | |
| EFFICIENCY. | | | |
| NOTES: | | | |
| 1. BASE DESIGNED TO SUPPORT PUMP AND ELBOWS. ALL OTHER PIPING, VALVES MUST BE SEPARATELY SUPPORTED BY PIPE HANGERS, (INCLUDING WATER WEIGHT). | | | |
| 2. IF FLEXIBLE CONNECTIONS OR EXPANTION JOINTS ARE USED IN PUMP SUCTION OR DISCHARGE PIPING THEY MUST INCLUDE CONTROL RODS OR CONTROL CABLES. | | | |
| VIBRATION ELIMINATOR CO. INC. | | | |
| 15 Dixon Avenue Copiague, NY 11726 | | | |
| PH. (631) 841-4000 FAX (631) 841-0020 | | | |
| JOB. | | | |
| CONTR. | | | |
| PO.NO | | | |
| DWG. NO. | | | |



BASE EXTENDED TO SUPPORT LONG RADIUS ELBOW.

FOR DETAILS OF ISOLATOR REFER TO V.E. DWG. NO. _____

BASE TO BE FILLED WITH CONCRETE AT JOBSITE BY OTHERS. SEE DWG. JLB4201A FOR INSTALLATION INSTRUCTIONS.