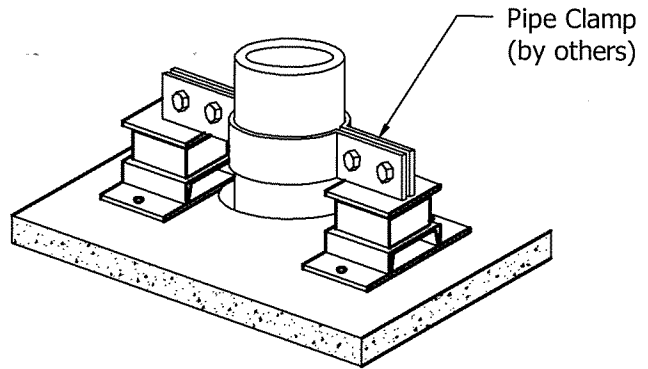
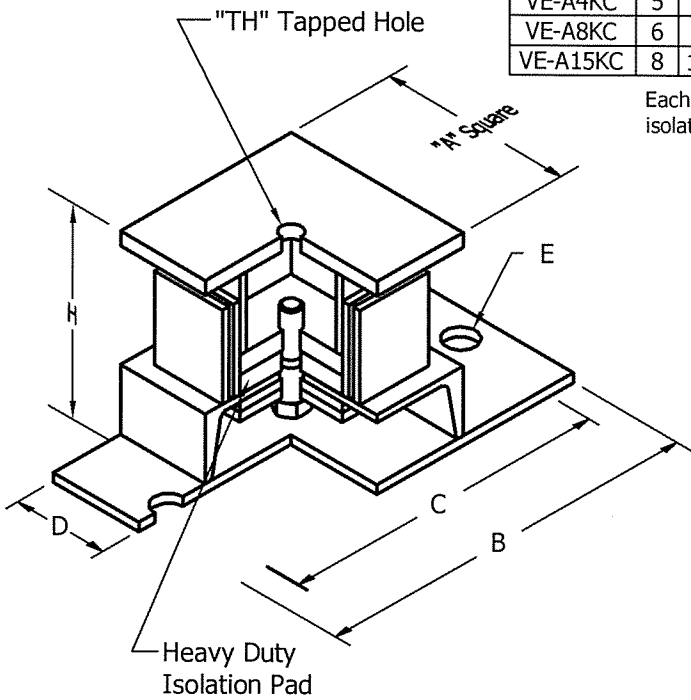


# MODEL "VE-A" ALL DIRECTIONAL ANCHOR

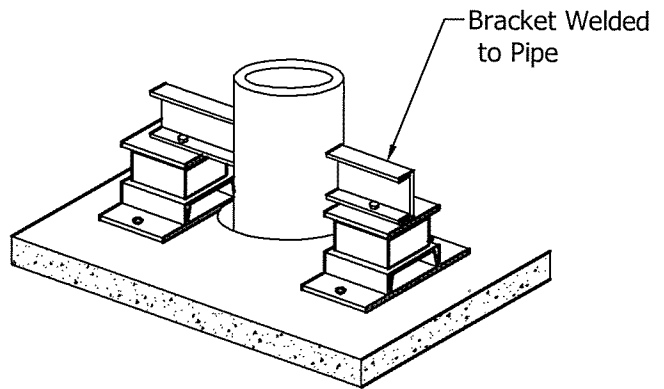
MODEL	A	B	C	D	E	H	TH	Capacity per Pair	Rated Defl.
VE-A1KC	3	7	5	1 1/2	9/16	4 1/2	3/8-16UNC	700#	0.1"
VE-A3KC	3	7	5	1 1/2	9/16	4 1/2	3/8-16UNC	3,000#	0.1"
VE-A4KC	5	9	7	2 1/2	9/16	5 1/4	1/2-13UNC	8,000#	0.1"
VE-A8KC	6	9	7	3	11/16	5 1/4	1/2-13UNC	16,000#	0.1"
VE-A15KC	8	12	10	4	11/16	8 3/8	5/8-11UNC	30,000#	0.1"

Each pair of all directional anchors provides high frequency noise and vibration isolation for those locations where movement must be controlled.



### Isolation Pad Physical Properties

- Tensile Strength ..... 1,000 p.s.i. min.
- Compressive Strength ..... 10,000 p.s.i. min.
- % Elongation ..... 100 max.
- Durometer (Shore A) ..... 80 ± 5
- Tear Strength ..... 600 lb. min.  
(Whith Grain and Across Grain)
- Abrasion Resistance ..... .00012  
(Grams/Rev. Max. Surface Removal)



JOB: \_\_\_\_\_  
 CONTRACTOR: \_\_\_\_\_  
 P.O. NO.: \_\_\_\_\_

**Vibration Eliminator Co., Inc.**  
 15 Dixon Avenue, Copiague NY 11726  
 Tel. (631)841-4000 Fax (631)841-0020

DWG.# \_\_\_\_\_