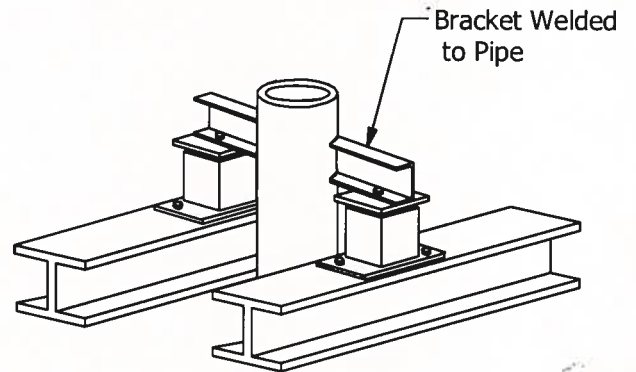
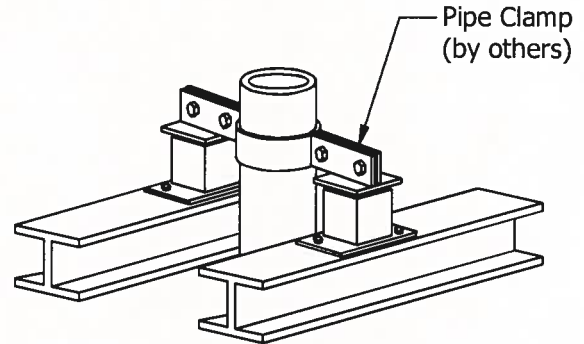
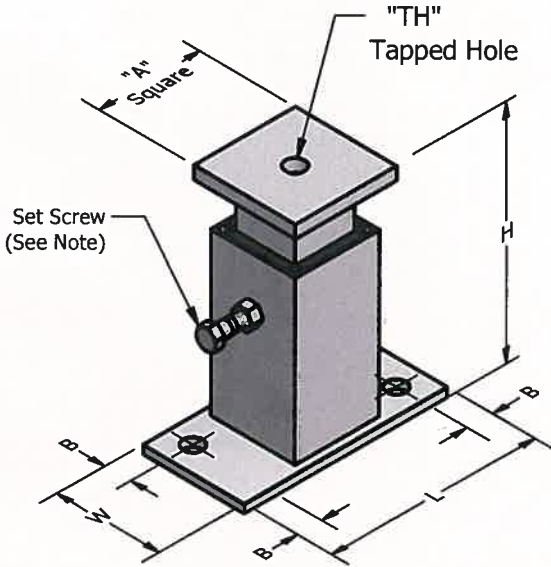


# MODEL "VE-SG" VERTICAL GUIDE

MODEL	A	B	H	L	TH	W
VE-SG1	3	3/4	6 5/8	6	1/2-13UNC	3
VE-SG2	3	3/4	5 1/2	6	1/2-13UNC	3

**Note:** Remove Set Screw after installation (VE-SG1 only).  
Bolt or weld pipe clamp or bracket to guide.



## Isolation Pad Physical Properties

Tensile Strength .....	1,000 p.s.i. min.
Compressive Strength .....	10,000 p.s.i. min.
% Elongation .....	100 max.
Durometer (Shore A) .....	80 ± 5
Tear Strength .....	600 lb. min.
(Whith Grain and Across Grain)	
Abrasion Resistance .....	.00012
(Grams/Rev. Max. Surface Removal)	

**Each pair of VE-SG Guides provides high frequency noise and vibration isolation.**  
**VE-SG1 Guides are set to accommodate 1-1/8" Upward or Downward movement.**  
**VE-SG2 Guides are set to accommodate 2-1/4" Upward movement.**  
**Guides are always used in pairs.**



JOB: \_\_\_\_\_  
 CONTRACTOR: \_\_\_\_\_  
 P.O. NO.: \_\_\_\_\_

**Vibration Eliminator Co., Inc.**  
 15 Dixon Avenue, Copiague NY 11726  
 Tel. (631)841-4000 Fax (631)841-0020

DWG.#