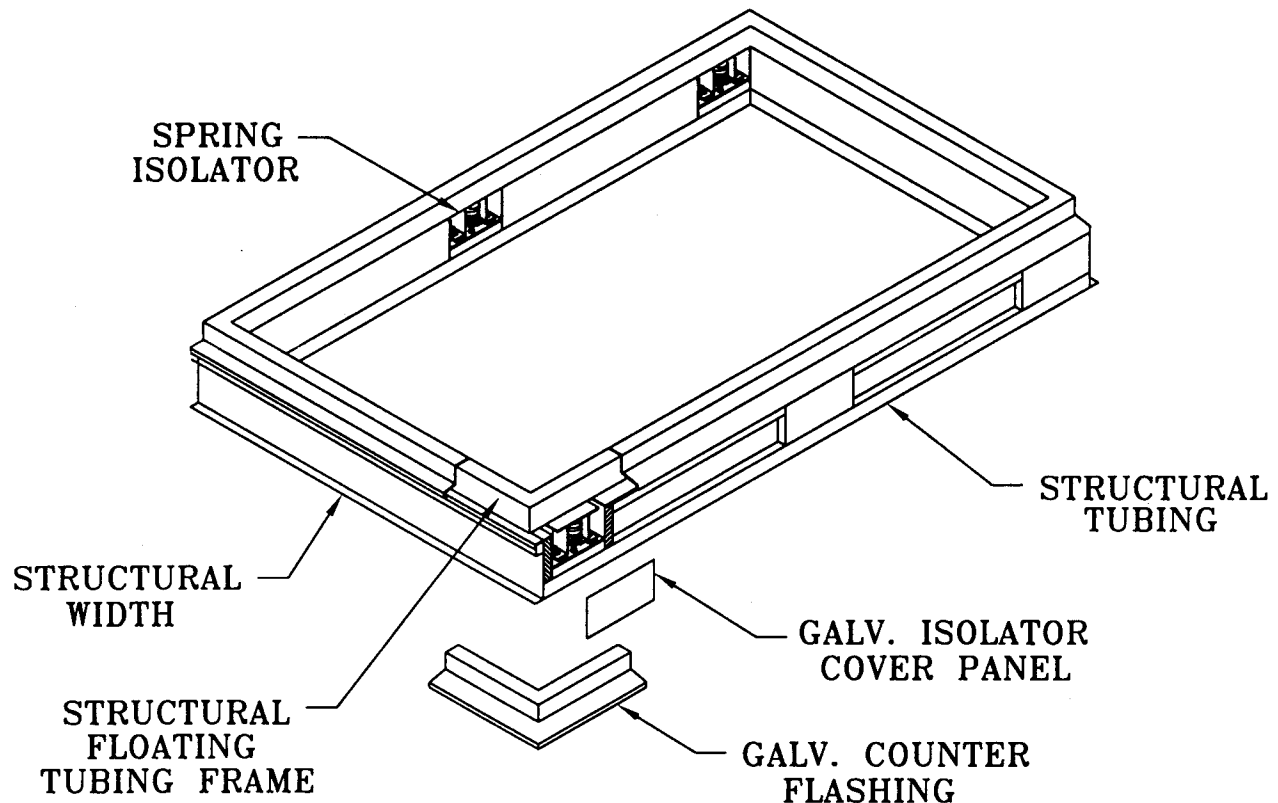




'VERC' ADJUSTABLE ISOLATION SEISMIC ROOFCURB

Vibration Eliminator Co. model 'VERC' Isolation Roof Curb combines a structural steel roof curb with adjustable high deflection spring isolators into a single one piece assembly. Its unique design incorporates seismic and wind protection, while large spring deflections allow the project designer to locate his HVAC equipment over vibration sensitive roof areas.



To provide trouble free installation, the 'VERC' roof curbs are factory assembled and shipped in one piece. They are available in 1, 2 or 3 inch spring deflections and can be designed to accommodate various roof slopes.

V.E. Form 00-039

Vibration Eliminator Co., Inc. ■ 15 Dixon Avenue ■ Copiague, New York 11726
Tel: (631) 841-4000 Fax: (631) 841-0020

Specifications

All rooftop package HVAC units ducted from underneath and passing through the roof shall be supported by a spring isolated roofcurb assembly. This assembly shall provide continuous equipment support and weather tight protection, while directly attached to the roof structure.

The system shall be designed to support the HVAC equipment to a fixed elevation during erection and operation, and to be suitable to be flashed into the waterproof roof membrane. The lower assembly perimeter shall have provisions to accommodate two inches of rigid insulation furnished and installed by the roofing contractor.

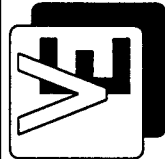
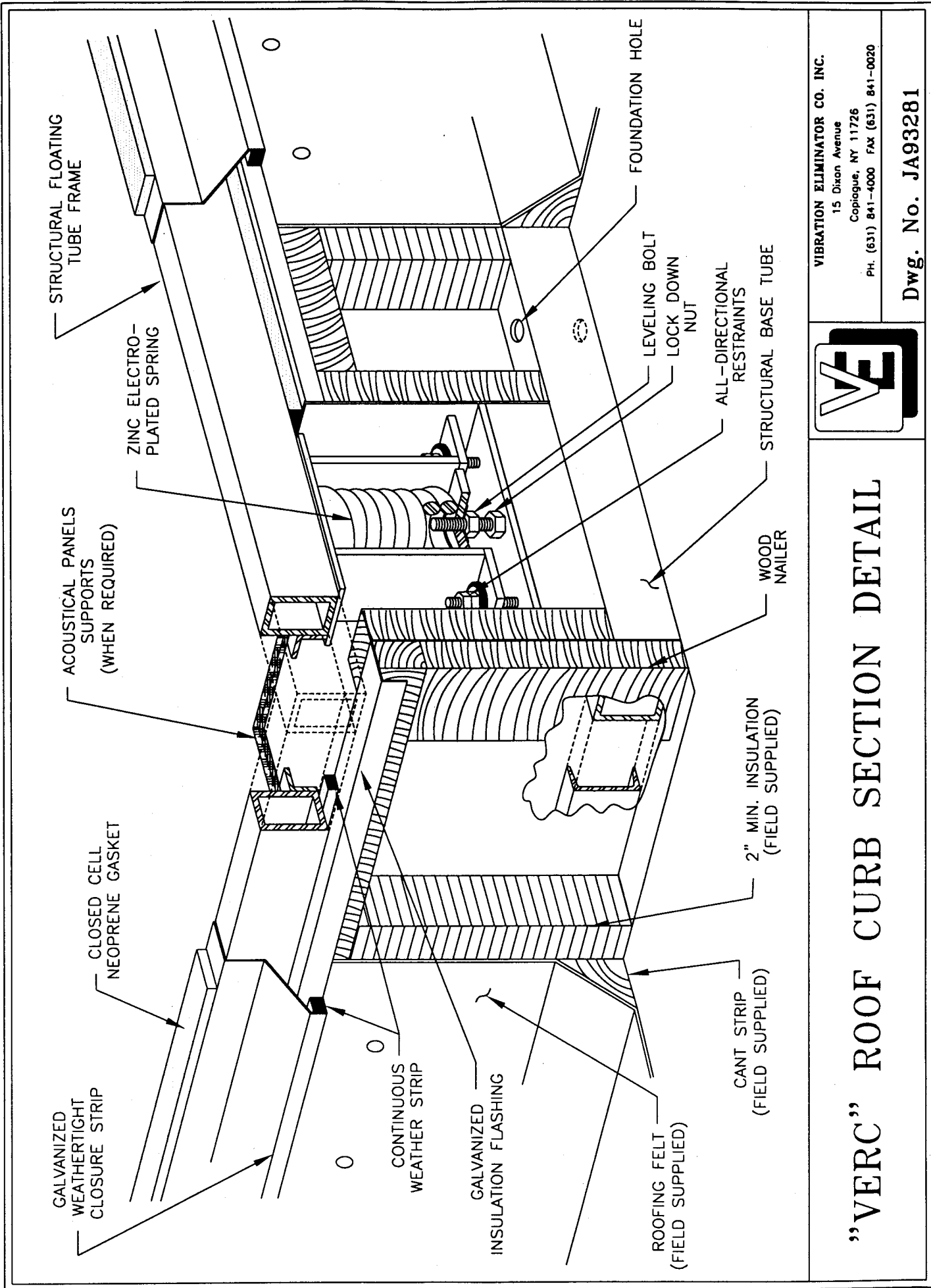
The assembly shall consist of upper and lower structural steel members extending completely around the perimeter of the equipment. The lower member shall incorporate provisions for bolting or welding to the roof deck. If required, the bottom of the curb shall be constructed to accommodate the pitch of the roof, while maintaining the equipment in a horizontal and level position. The system shall be designed with 2 or 3 inch static deflection steel springs located between the upper and lower sections, which are adjustable and removable. The spring isolators shall include built in vertical and lateral restraints to resist wind and seismic forces restricting movement to a 1/4 inch in all directions.

All springs shall be free standing and laterally stable meeting a minimum of 0.8 ratio of spring diameter to compressed height, and providing additional travel to solid of 50% of rated deflection. Springs and hardware shall be zinc electroplated to prevent rust. All isolator location compartments shall have removable waterproof covers to allow for viewing, adjustment or replacement of spring isolators.

Weatherproofing shall be provided by a continuous galvanized counter flashing attached to the entire upper floating section of the assembly. A closed cell neoprene seal shall be attached to the underside of the counter flashing to prevent metal to metal contact and provide air and weather tight protection. All remaining steel sections not plated or galvanized shall be coated with a dry galvanized coating.

All supply and return air ducts shall be flexibly connected to prevent vibration transmission to the building structure. In addition, flexible connectors shall be installed on all water, Freon and electrical conduits.

The isolation curb system shall be model VERC as manufactured by the *Vibration Eliminator Co., Inc.*



VIBRATION ELIMINATOR CO. INC.
 15 Dixon Avenue
 Copiague, NY 11726
 PH. (631) 841-4000 FAX (631) 841-0020

"VERC" ROOF CURB SECTION DETAIL

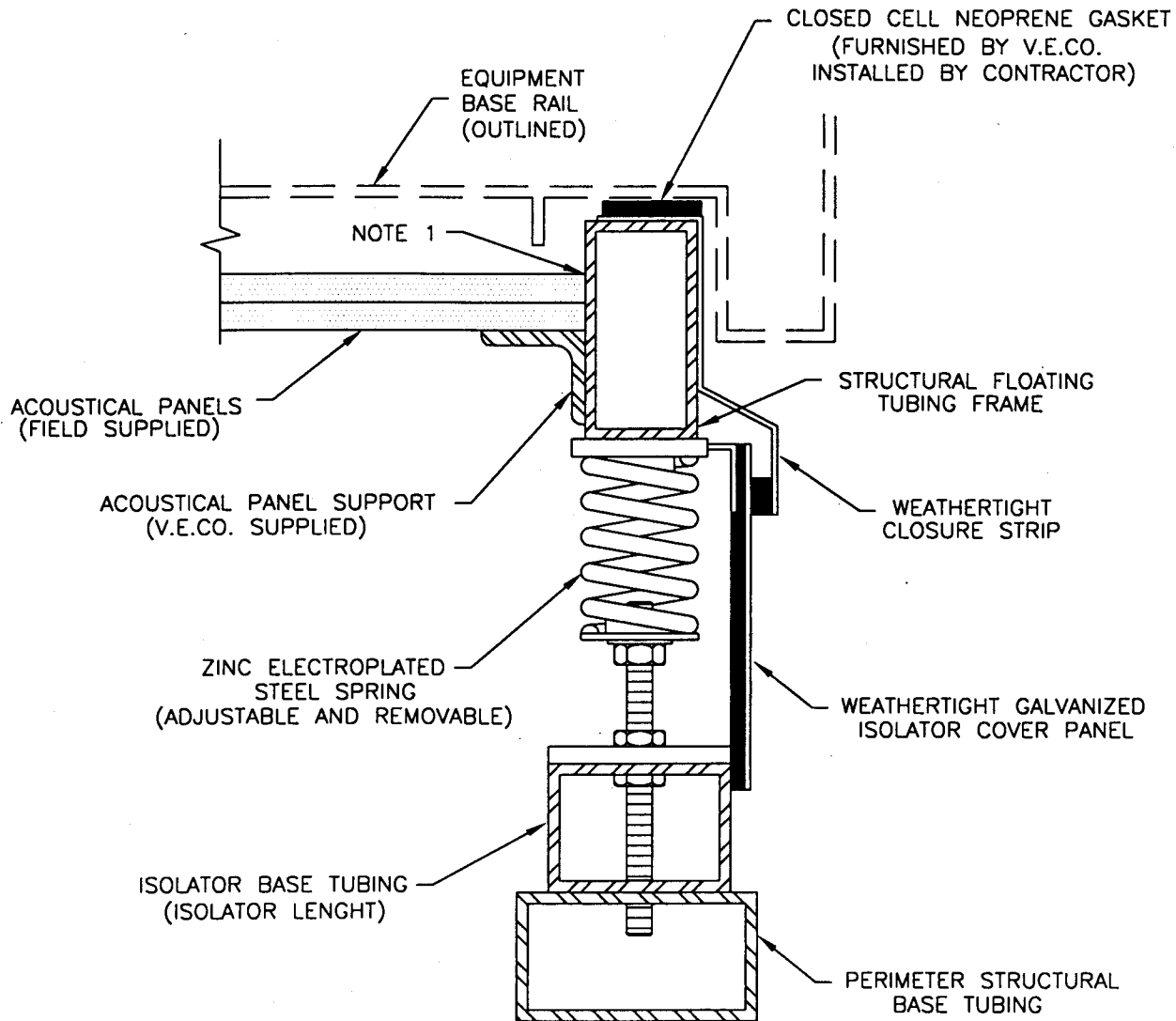
Dwg. No. JA93281



Vibration Eliminator

Co., Inc.

'VERC' ISOLATION ROOF CURB - APPLICATION DETAILS



LENGTH ELEVATION

NOTE:

- (1) THE ACOUSTICAL BARRIER SHALL BE FIELD CAULKED ALONG THE PERIMETER & AT DUCT PENETRATIONS TO MINIMIZE SOUND TRANSMISSION.
- (2) ISOLATOR WOOD ACCESS PORTS ARE EXCLUDED FOR CLARITY.

VIBRATION ELIMINATOR CO., INC. ■ 15 Dixon Avenue ■ Copiague, New York 11726
Tel. (631) 841-4000 Fax (631) 841-0020

VERC