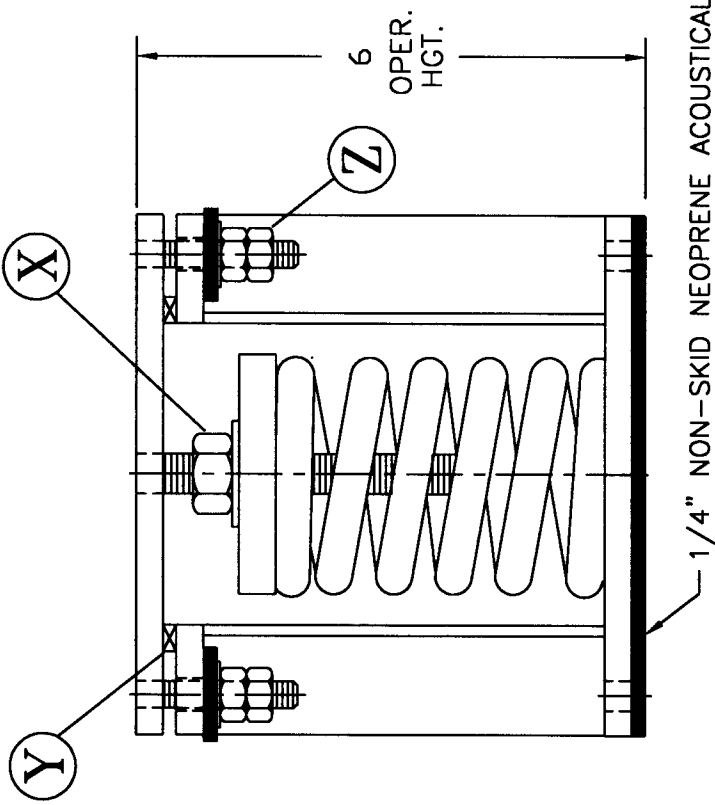
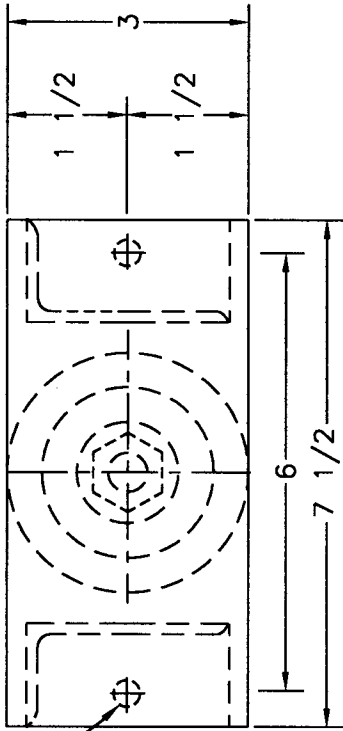


# TYPE "1KW10" VERTICALLY RESTRAINED SPRING ISOLATOR

9/16 DIA. HOLE



ALL HARDWARE ZINC-ELECTROPLATED

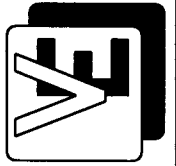
ISOLATOR TYPE	COLOR CODE	RATED LOAD	RATED DEFL.
1KW10	Silver	40 #	2.0"
	Yellow	80 #	2.0"
	Red	120 #	2.0"
	Green	180 #	2.0"
	Blue	250 #	2.0"
V40 V41 V42 V43 V44 V45	Orange	350 #	2.0"

INSTALLATION INSTRUCTIONS:

1. INSTALL ISOLATORS UNDER BRACKET, BASE OR EQUIPMENT LEG. ISOLATORS MUST BE INSTALLED ON A LEVEL SURFACE.
2. INSTALL EQUIPMENT (INCLUDING ALL PIPING & WATER FOR COOLING TOWER).
3. TEMPORARILY REMOVE ALL VERTICAL LOCK NUTS "Z" FROM HOLD-DOWN BOLTS.
4. ADJUST ISOLATORS BY TURNING LEVELING NUT "X" CLOCKWISE SEVERAL TURNS AT A TIME ALTERNATELY ON EACH ISOLATOR UNTIL EQUIPMENT BEGINS TO RAISE. THEN LEVEL AS REQUIRED AND REMOVE TEMPORARY SHIMS "Y".
5. REPLACE ALL VERTICAL LOCK NUTS "Z" ON HOLD-DOWN BOLTS AND FASTEN FINGER TIGHT. EQUIPMENT IS NOW READY TO BE OPERATED.

1/4" NON-SKID NEOPRENE ACOUSTICAL PAD

C2000/1KW10-SM.DWG



VIBRATION ELIMINATOR CO. INC.

15 Dixon Avenue  
Copiague, NY 11726

TEL. (631) 841-4000 FAX (631) 841-0020

JOB : \_\_\_\_\_  
 CONTRACTOR : \_\_\_\_\_  
 P.O. NO. : \_\_\_\_\_

Dwg. No. \_\_\_\_\_