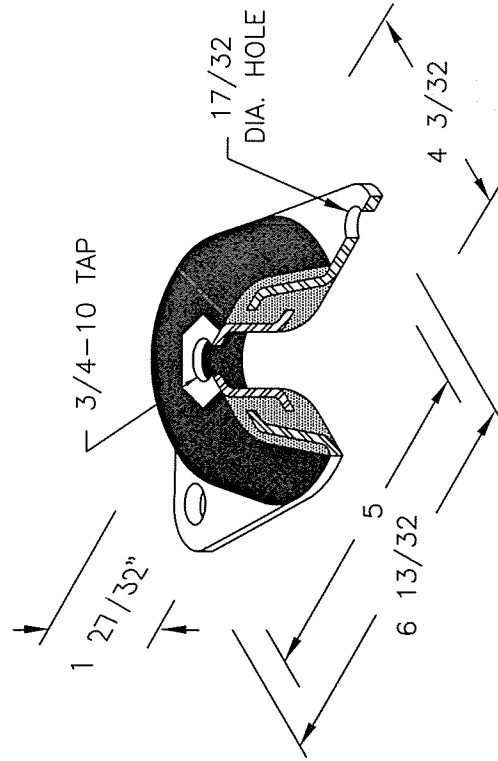


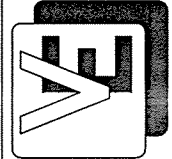
ALL DIRECTIONAL STEEL NEOPRENE ISOLATOR TYPE "T64"



NOTE:
ISOLATORS ARE MOLDED OF 30, 40, 50, 60, 70 DUROMETER NEOPRENE WITH AN INTERLOCKING SYSTEM OF METAL PARTS.

Durometer	K Value (lbs./in.)	Max. Recommended Deflection	Load in lbs. @ Max. Deflection
30	7577	.125"	950
40	9285	.125"	1160
50	13071	.125"	1635
60	20119	.125"	2515
70	34400	.125"	4300

ISOLATOR ANCHORAGE: USE (2)-1/2" DIA. HEX HEAD BOLTS W/ WASHERS (316 SS)



VIBRATION ELIMINATOR CO. INC.
15 Dixon Avenue
Copiague, NY 11726
TEL. (631) 841-4000 FAX (631) 841-0020

JOB : _____
CONTRACTOR : _____
P.O. NO. : _____

Dwg. No. _____